

User Manual

NX-400/600 for Coolant Mist and light Oil Mist.

Oil-and Coolant mist.

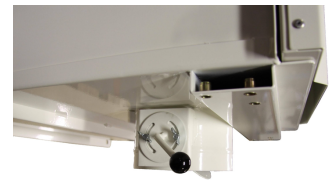
NX-400 and NX-600 are Extractor Filters for extraction of Coolant Mist and light Oil Mist from lathes, milling machines, drilling machines and other machines with the same problems.

Easy to get started

The NX filters are complete units with filter, fan, silencer and adjustable inlet damper. Holders for wall mounting or hanging from the ceiling are built in. Can also be equipped with legs for mounting standing on the machine.

Simple Installation.

Just attach a diameter 160mm hose between the bottom of the NX filter and the machine. Plug it into a socket. Adjust the built in damper so just the mist will be exhausted. Lock the damper with the locking screw. The filtered liquid will drop back to the machine through the inlet hose.



Five steps – 99.95% Efficiency.

1) Inlet “plash” plate. 2) Expansion chamber. 3) Labyrinth filter. 4) “Long Life” nailed Glass-Fiber Filter Cassette with Aluminum Separators. 5) HEPA H13 Filter (To be ordered separately).



NX-400/3-Phase



NX-400/3-Phase with HEPA Filter

| | Art. No. |
|-----------------------------------------------------------------------------------------------|----------|
| NX-400/1-phase/0.37kw/220v/50Hz. Start/Stop. 4m cable. 450(W)x450(D)x850mm(H). | P-588 |
| NX-400/3-phase/0.37kw/440v/50Hz. 450(W)x450(D)x850mm(H). | P-590 |
| NX-600/1-phase/0.75kw/220v/50Hz. Start/Stop.4m cable. 510(W)x560(D)x850mm(H). | P-592 |
| NX-600. 3-phase/0.75kw/440v/50Hz. 510(W)x560(D)x850mm(H). | P-594 |
| HEPA H13 Filter for NX-400 H13(6m2). 350(W)x420(D)x200mm(H). | P-595 |
| HEPA H13 Filter for NX-600 H13 (9m2). 430(W)x490(D)x 200mm(H). | P-596 |
| Legs 0.2m. 4pcs. | P-597 |
| Legs 0.4m. 4 pcs. | P-598 |
| Replacement Filter Cassette NX-400.Nailed Glass-Fiber with Alu Separators (3+3m2). | P-599 |
| Replacement Filter Cassette NX-600.Nailed Glass-Fiber with Alu Separators (4.5+4.5m2). | P-600 |

Table of Contents

1.0 General Information

- 1.1 Safety Note**
- 1.2 Range of Application**
- 1.3 Unit Description**
- 1.4 Installation**
- 1.5 Electrical**
- 1.6 Start-Up**
- 1.7 Technical Data**
- 1.8 Fan Data**

2.0 Maintenance

- 2.1 General Information**
- 2.2 Filter Changes**
- 2.3 Replacement Filters**
- 2.4 Spare Parts**

1.0 General Information

NX-400/600 are mechanical Emulsion/Coolant Mist and Light Oil Mist separators with a degree of separation of 99,95 % for particles down to 0.1 micron (when equipped with HEPA filter).

The device is equipped with a Labyrinth Filter, a Fiberglass Flies Filter Cassette with aluminium separators and can be equipped with a HEPA-Filter (To be ordered separately) and 4 legs (200mm or 400mm to be ordered separately).

The complete unit consists of::

- ✓ Housings made from powder coated steel sheet with integrated Wall and Ceiling brackets.
- ✓ Labyrinth filter
- ✓ Filter Cassette of Glassfiber Flies
- ✓ Fan
- ✓ HEPA filter (Extra equipment)
- ✓ Switch with overload protection (1-Phase Models)
- ✓ Electric Cable with Plug (1-Phase Models)
- ✓ Adjustable inlet Damper with locking.
- ✓ Splash Plate

1.1 Safety Note!

**Always disconnect the supply voltage before opening or servicing the device.
Don't exhaust sparks or other objects which can cause fire.**



1.2 Range of application

Indoors for separation of emulsion/coolant mist and light oil mist from Lathes, Milling Machines, Drilling Machines and other works with the same problems.

1.3 Unit Description

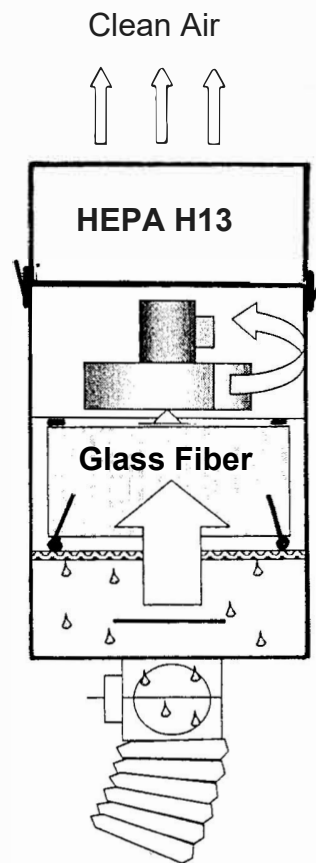
HEPA H13 Filter Box (Extra equipment)

Fan, Circuit Braker with overload protection and 4m Cable with Plug (1-Phase Models). 3-Phase Models have just a Connection Box.

Glass Fiber Filter Cassette with Alu. Separators. Exenter Lockers to press the Cassette upwards. Door with quick lockers.

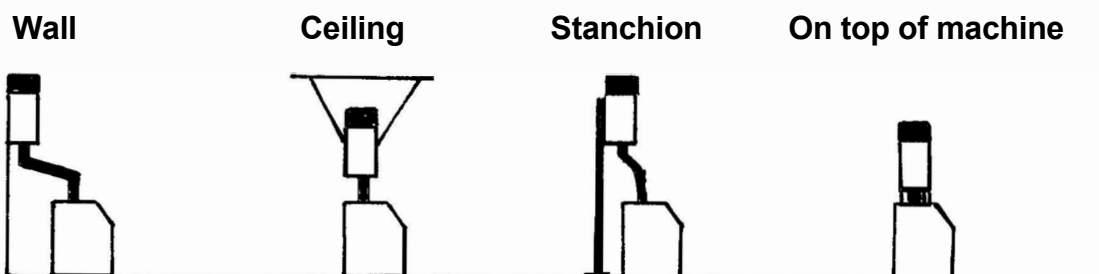
Washable Labyrinth Filter. Expansion Chamber. Inlet "Splash" Plate.

Inlet from the bottom side with lockable Damper.



1.4 Installation

The NX unit is equipped with built in Brackets for Wall or Ceiling mounting. Make sure there are enough space to perform service and maintenance. Select the installation with regard to piping as short as possible. The ducting shall be leaning downwards all the way from the NX unit to the Machine. This to make the filtered liquid go back to the machine again. When you mount the NX on top of the machine you need Legs 0.2m or 0.4m (Extra equipment). The NX unit is prepared for mounting legs.

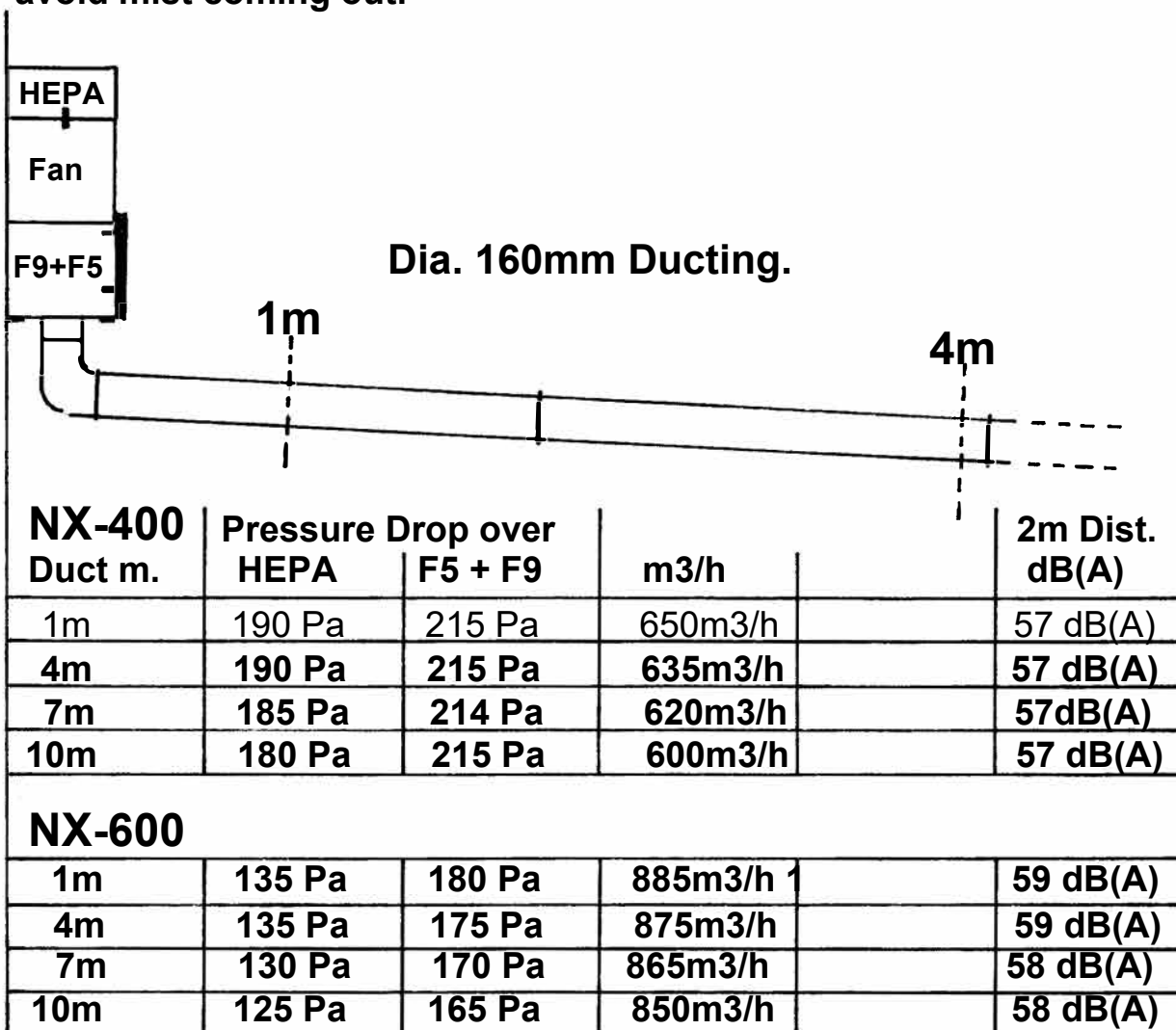


Ducting: It is important that the ducting is leaning downwards from the NX Unit to the Machine which it is extracting from. This makes the filtered liquid go back to the machine for use again.

The ducting has to be of oil/water resistant and tight material and with tight connections. With more bends in the system the initial air volume will be lower. The values below are with clean filters.

When the Glass Fiber Filter Cassette (F5+F9) is saturated with mist, the cleaned liquid will start to drop down from it and back to the machine, through the ducting.

Air velocity 0.5m/sec. is needed, in the opening of the machine, to avoid mist coming out.



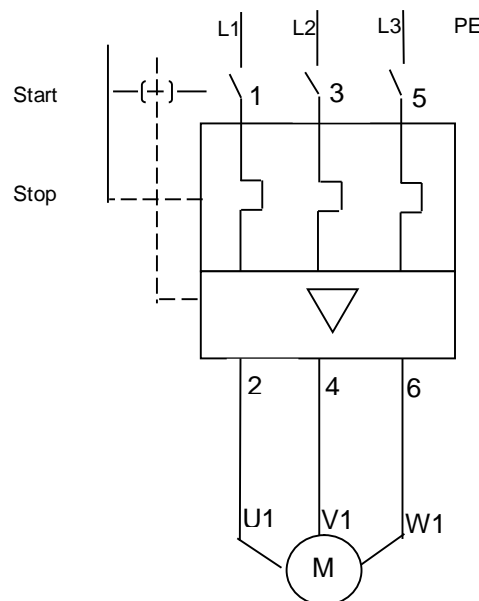
Attention! NX-600 has more m2 in each filter than NX-400. That is why the pressure drop is lower despite higher air volume.

1.5 Electrical

Mobi-Oil 1 Phase comes complete with switch with overload protection, 4m cable and plug .

Mobi-Oil 3-Phase comes with switch with overload protection, but without cable and plug..

The electrical installation of the 3-phase unit is only to be done by a qualified and licensed electrician.



1.6 Start-Up

Before start-up, please read this manual and be familiar with the operation of the unit.

Determine that the Cassette filter box is correctly mounted in the unit. The gasket shall be upwards and the exenter buckles also upwards to make it sit tight.

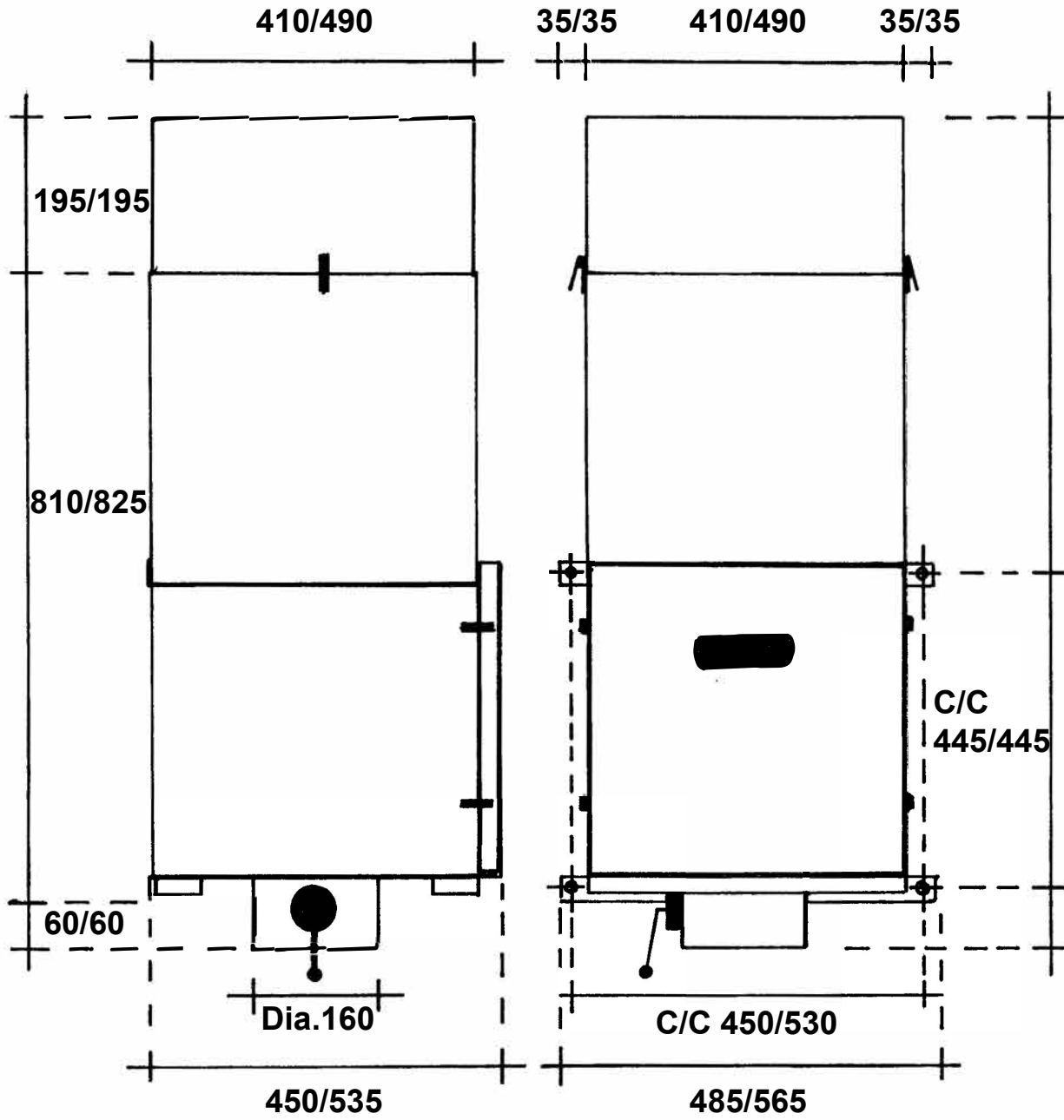
Mobi-oil 3- fase. Observe the direction of rotation when switching on the fan.

When in use adjust the Damper in the inlet so only mist will be extracted. No liquid drops. Lock the damper in this position. It will make the HEPA filter last longer. Clean air will come out of the top of the NX Unit.

After some time (depending on how much used) the Glassfiber filter will be saturated and clean coolant will start to drop back into the Machine it is connected to.

1.7 Technical Data

Measures in mm. NX-400/600



1.8 Fan Data

| NX-400 1~ | NX-400 3~ | NX-600 1~ | NX-600 3~ |
|-------------|-------------|-------------|-------------|
| 220V | 400V | 220V | 400V |
| 0,37 kW | 0,37 kW | 0,75 kW | 0,75 kW |
| 2,73 A | 0.94 A | 5 A | 1,83 A |
| 2.900 r/min | 2.900 r/min | 2.900 r/min | 2.900 r/min |
| 50 Hz | 50 Hz | 50 Hz | 50 Hz |
| IP-54 | IP-54 | IP-54 | IP-54 |

2.0 Maintenance

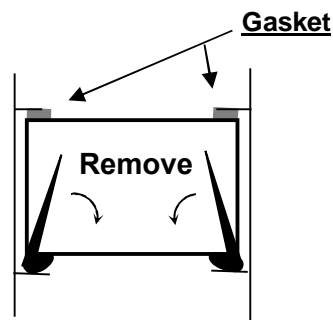
2.1 General Information

The filter cassette is self cleaning and service life is normally around 2 years or more.

The HEPA-Filter should be changed after around 18 months

2.2 Filter Changes

1. Turn unit off and loosen the quick-locking of the door. Remove the door from the device.
2. To remove the Filter Cassette, turn the exenter buckles down horizontally.



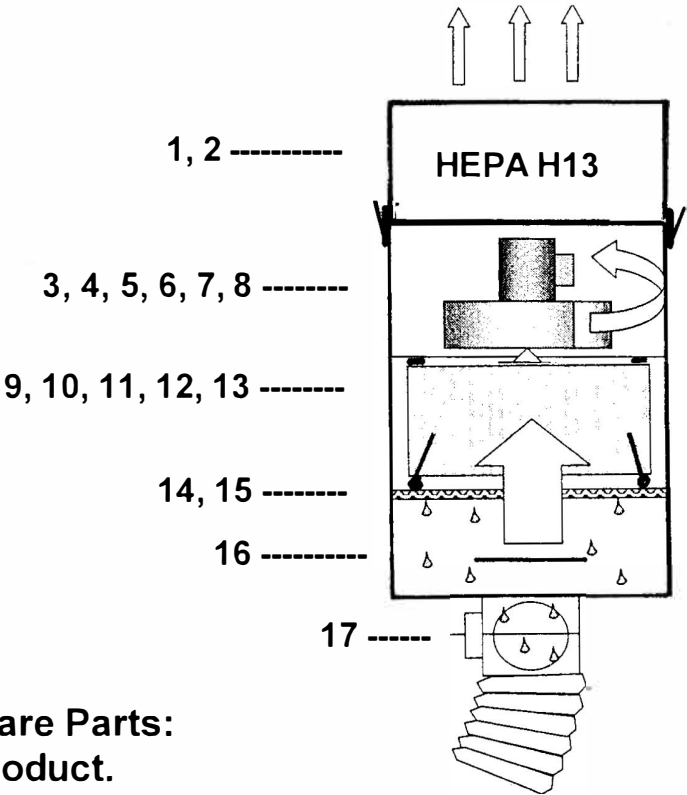
3. Install the new Filter Cassette with the GASKET UPWARDS. Turn the exenter buckles Upwards.

If the NX-400/600 is equipped with a HEPA filter. You change it by unlocking the quick locks on the sides and replace it with a new one.

2.3 Replacement Filters

| Product | NX-400 | NX-600 |
|-------------------|--------------|--------------|
| HEPA Filter Box | Art.No P-595 | Art.No P-596 |
| Glassfiber Filter | Art.No P-599 | Art.No P-600 |

2.4 NX-400/600 Spare Parts.



**When ordering Spare Parts:
Specify Name of Product.
Number and Name from below.
Quantity of each Part.**

1. NX-400 HEPA H13 Filter Box P-595.
2. NX-600 HEPA H13 Filter Box P-596.
3. Electric Switch NX-400/1-phase with Overload Protection.
4. Electric Switch NX-600/1-phase with Overload Protection.
5. Electric Motor NX-400/1-phase/220V/0.37kW/50Hz.
6. Electric Motor NX-600/1-phase/220V/0.75kW/50-60Hz.
7. Impellar NX-400.
8. Impellar NX-600.
9. Door NX-400 complete.
10. Door NX-600 complete.
11. Glass Fiber Cassette NX-400.
12. Glass Fiber Cassette Nx-600.
13. Exenter Lock for Glass Fiber Cassette (2pcs.) NX-400/600.
14. Labyrinth Filter NX-400.
15. Labyrinth Filter NX-600.
16. Splash Plate NX-400/600.
17. Lockable Damper complete N-400/600.
18. Electric Motor NX-400/3-phase/0.37kW/400V/50Hz.
19. Electric Motor NX-600/3-phase/0.75kW/400V/50Hz



Declaration of conformity

We, J. Plymoth AB, declare under our sole responsibility that the product lines **WF-Eco, MF-F9/HEPA, MF-Active Carbon, MF-HEPA/W3 18M2, MF-Eco/F9, MF-Eco/HEPA, MF-Filter-Tables, MF-Eco Filter-Tables, FK-Mesa Backdraft Filter-Tables, MKF Filter-Tables, Labbe, MF-Lab, MF-Eco Lab, CF Central Filters, Mobo-Oil, NX Filters, Denta-Flex, Fica-Flex and VBF-Office** to which this declaration relates are in conformity with Directives 2006/42/EC, 2014/30/EU, 2011/65/EU and Standards EN 60204-1:2006, EN ISO 12100:2010, EN ISO 15012-1:2013, EN 61000-6-2:2005, EN 61000-6-3:2007, EN ISO 20607:2019.

J. Plymoth AB
Traryds Allen 4D
28772 Traryd


Jenny Nilsson
Verkställande Direktör

2023-01-01