

Technical Data

NX-400/600 for Coolant Mist and light Oil Mist.

Oil-and Coolant mist.

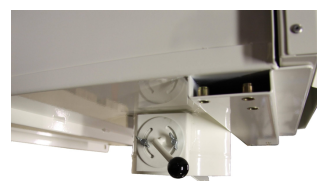
NX-400 and NX-600 are Extractor Filters for extraction of Coolant Mist and light Oil Mist from lathes, milling machines, drilling machines and other machines with the same problems.

Easy to get started

The NX filters are complete units with filter, fan, silencer and adjustable inlet damper. Holders for wall mounting or hanging from the ceiling are built in. Can also be equipped with legs for mounting standing on the machine.

Simple Installation.

Just attach a diameter 160mm hose between the bottom of the NX filter and the machine. Plug it into a socket. Adjust the built in damper so just the mist will be exhausted. Lock the damper with the locking screw. The filtered liquid will drop back to the machine through the inlet hose.



Five steps – 99.95% Efficiency.

1) Inlet “plash” plate. 2) Expansion chamber. 3) Labyrinth filter. 4) “Long Life” nailed Glass-Fiber Filter Cassette with Aluminum Separators. 5) HEPA H13 Filter (To be ordered separately).



NX-400/3-Phase



NX-400/3-Phase with HEPA Filter

	Art. No.
NX-400/1-phase/0.37kw/220v/50Hz. Start/Stop. 4m cable. 450(W)x450(D)x850mm(H).	P-588
NX-400/3-phase/0.37kw/440v/50Hz. 450(W)x450(D)x850mm(H).	P-590
NX-600/1-phase/0.75kw/220v/50Hz. Start/Stop.4m cable. 510(W)x560(D)x850mm(H).	P-592
NX-600. 3-phase/0.75kw/440v/50Hz. 510(W)x560(D)x850mm(H).	P-594
HEPA H13 Filter for NX-400 H13(6m2). 350(W)x420(D)x200mm(H).	P-595
HEPA H13 Filter for NX-600 H13 (9m2). 430(W)x490(D)x 200mm(H).	P-596
Legs 0.2m. 4pcs.	P-597
Legs 0.4m. 4 pcs.	P-598
Replacement Filter Cassette NX-400.Nailed Glass-Fiber with Alu Separators (3+3m2).	P-599
Replacement Filter Cassette NX-600.Nailed Glass-Fiber with Alu Separators (4.5+4.5m2).	P-600

Unit Description.

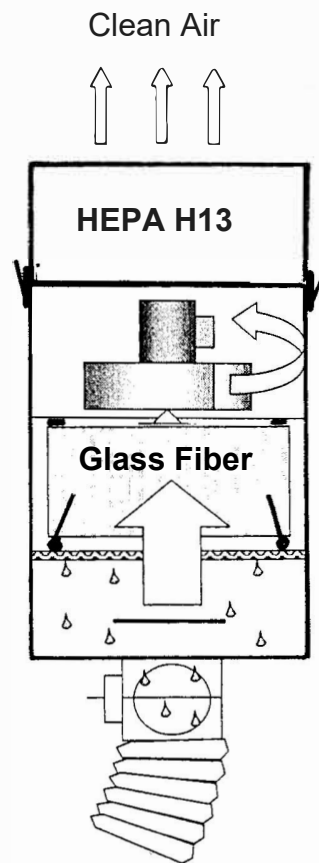
HEPA H13 Filter Box (Extra equipment)

Fan, Circuit Braker with overload protection and 4m Cable with Plug (1-Phase Models). 3-Phase Models have just a Connection Box.

Glass Fiber Filter Cassette with Alu. Separators. Exenter Lockers to press the Cassette upwards. Door with quick lockers.

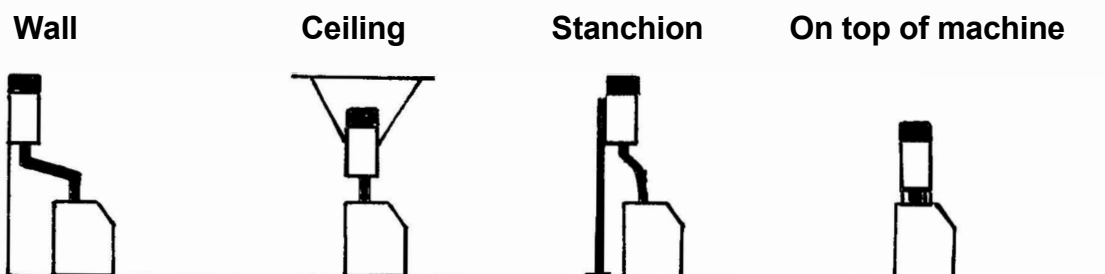
Washable Labyrinth Filter. Expansion Chamber. Inlet "Splash" Plate.

Inlet from the bottom side with lockable Damper.



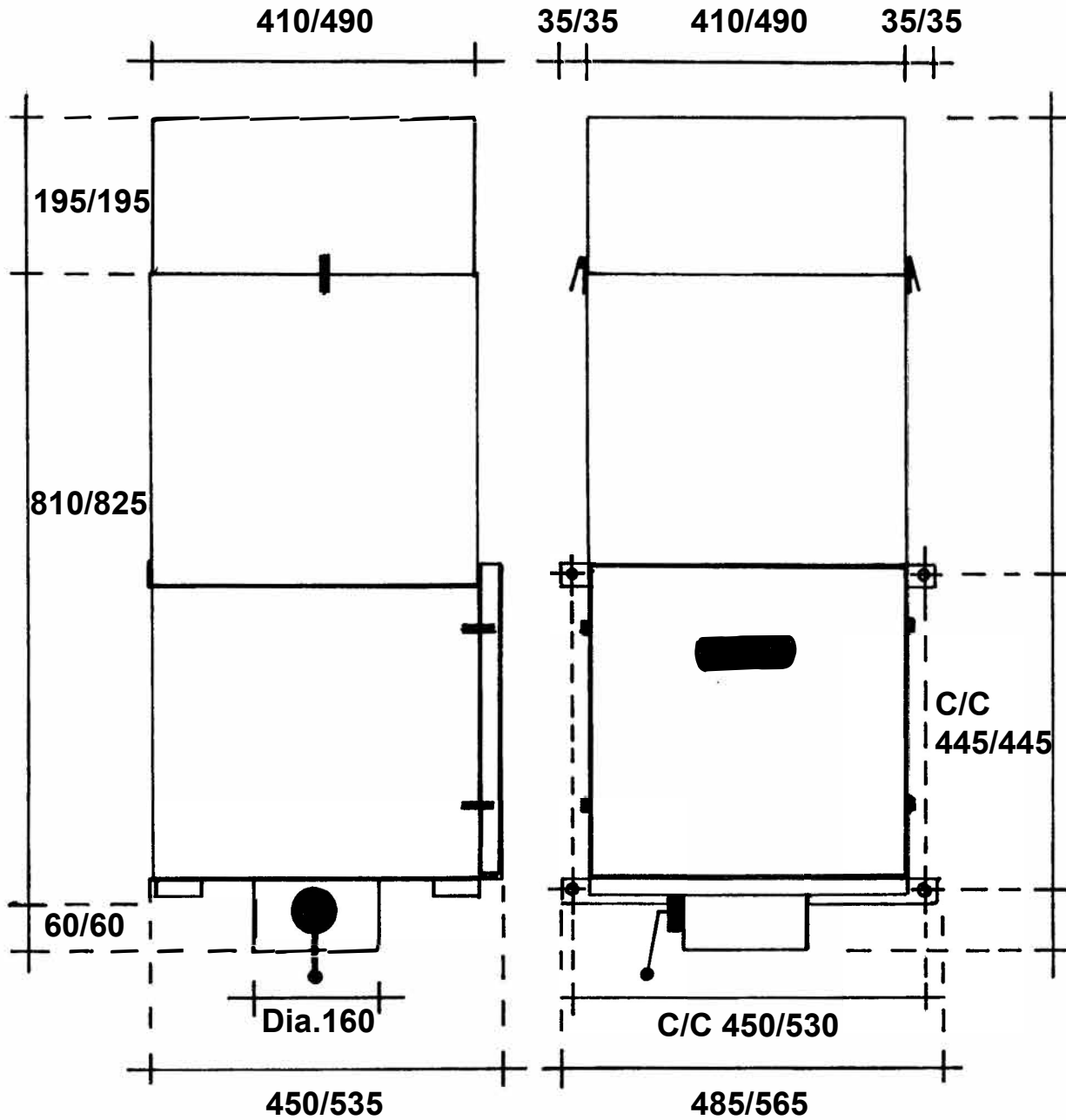
Installation.

The NX unit is equipped with built in Brackets for Wall or Ceiling mounting. Make sure there are enough space to perform service and maintenance. Select the installation with regard to piping as short as possible. The ducting shall be leaning downwards all the way from the NX unit to the Machine. This to make the filtered liquid go back to the machine again. When you mount the NX on top of the machine you need Legs 0.2m or 0.4m (Extra equipment). The NX unit has built in 3xM8 threads for each leg.



1.7 Technical Data

Measures in mm. NX-400/600

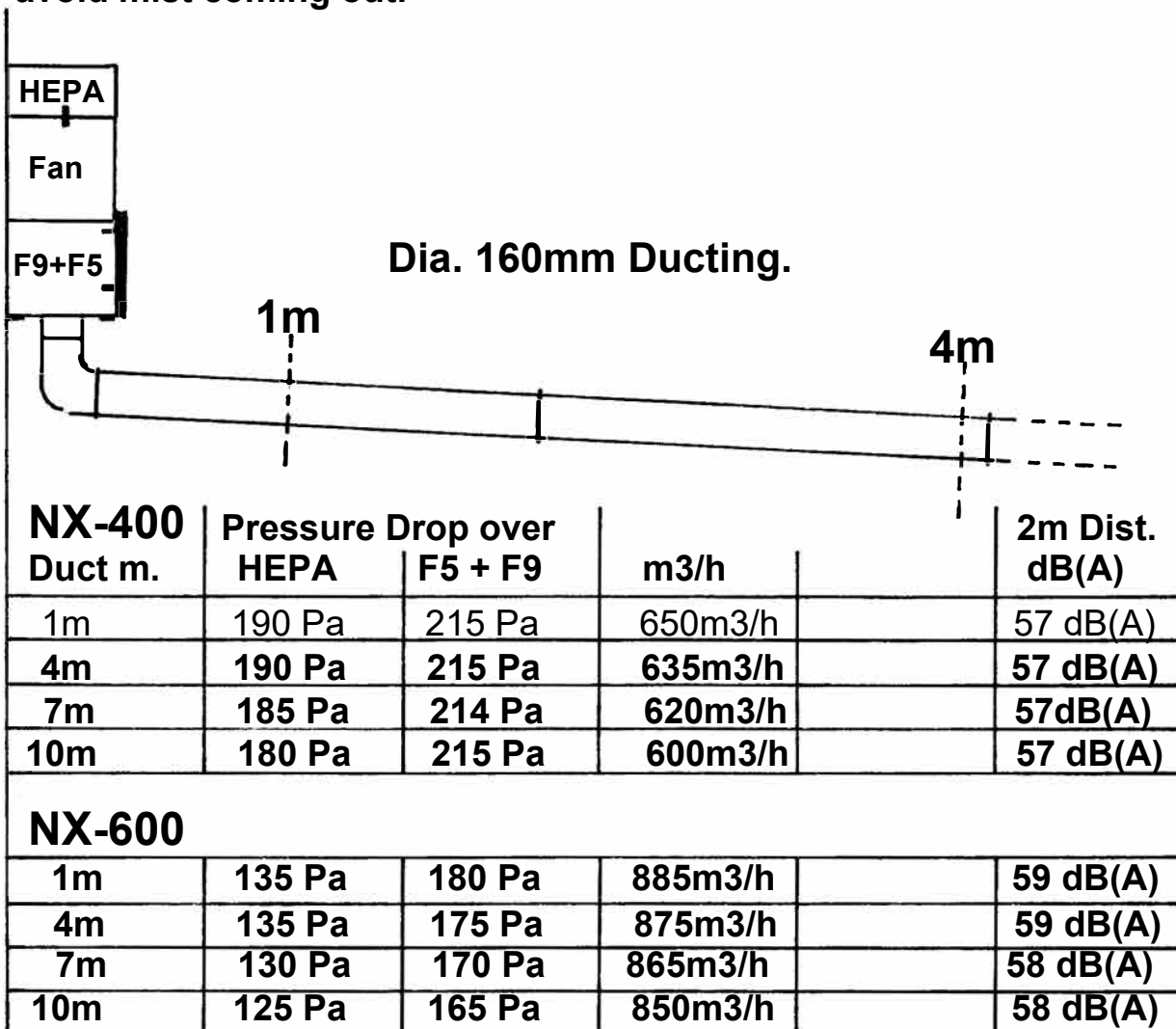


Ducting: It is important that the ducting is leaning downwards from the NX Unit to the Machine which it is extracting from. This makes the filtered liquid go back to the machine for use again.

The ducting has to be of oil/water resistant and tight material and with tight connections. With more bends in the system the initial air volume will be lower. The values below are with clean filters.

When the Glass Fiber Filter Cassette (F5+F9) is saturated with mist, the cleaned liquid will start to drop down from it and back to the machine, through the ducting.

Air velocity 0.5m/sec. is needed, in the opening of the machine, to avoid mist coming out.



Attention! NX-600 has more m2 in each filter than NX-400. That is why the pressure drop is lower despite higher air volume.



Declaration of conformity

We, J. Plymoth AB, declare under our sole responsibility that the product lines **WF-Eco, MF-F9/HEPA, MF-Active Carbon, MF-HEPA/W3 18M2, MF-Eco/F9, MF-Eco/HEPA, MF-Filter-Tables, MF-Eco Filter-Tables, FK-Mesa Backdraft Filter-Tables, MKF Filter-Tables, Labbe, MF-Lab, MF-Eco Lab, CF Central Filters, Mobi-Oil, NX-Filters, Denta-Flex, Fica-Flex and VBF-Office** to which this declaration relates are in conformity with Directives 2006/42/EC, 2014/30/EU, 2011/65/EU and Standards EN 60204-1:2006, EN ISO 12100:2010, EN ISO 15012-1:2013, EN 61000-6-2:2005, EN 61000-6-3:2007, EN ISO 20607:2019.

J. Plymoth AB
Traryds Allen 4D
28772 Traryd


Jenny Nilsson
Verkställande Direktör

2023-01-01