

User Manual

MF-Active Carbon Mobile Extractor-Filter 30 Ltr. for Gases and Odors.

Active Carbon 30 Ltr.

MF Active Carbon Mobile Extractor Filter has a “No Maintenance” replacement Cartridge Filter for gases/odors. 30 Ltr. Active Carbon in a Cartridge with Pre-Filter Fleece outside. Efficient built in, single phase, fan and 4.5m electric cable.

Application Examples

1. Cleaning / Degreasing
2. Conservation
3. Gluing / Bonding
4. Molding
5. Screen Printing

Flexible and Economical

MF is robust, yet easily maneuverable with 4 pivoting castors with brakes. With a super-flexible Flexi Extraction-Arm(1.5/2/3m) you have an extremely versatile and flexible filtration unit that can be moved between different workstations.



| | Art. Nr. |
|--|----------|
| MF-Active Carbon (30Ltr.) Mobile Extractor Filter 1-phase / 1.1 kW / 220 V / 50 Hz. Extraction Arm not included. | P-959 |
| Flexi Table/Filter Extraction Arm FLB 1.5 m / d.160 mm | P-069 |
| Flexi Table/Filter Extraction Arm FLB 2 m / d.160 mm | P-168 |
| Flexi Table/Filter Extraction Arm FLB 3 m / d.160 mm | P-169 |
| Replacement Active Carbon Filter 30 Ltr. with Pre-Filter Fleece | P-962 |
| Holder for 2 Flexi Filter Extraction Arms. D.160 mm. | P-086 |

Measures MF- Activ Carbon Mobile Extractor-Filter.



Weight: 70kg + Extraction-Arm 15-25kg (1.5m/2m/3m d.160mm).

MF-Active Carbon Mobile Extractor Filter

Operating Instructions

The filter unit is only intended for indoor use. It shall be equipped with an extraction arm which covers a radius of approx. two or three meters. In order to achieve a maximum collection level of air pollutants, the extraction unit's hood shall be positioned as close to the pollution source as possible.

The filter unit is designed for extraction and filtration of Gases and odors with light dust.

Note that the unit is not to be used for extraction of fluids or heavier dust.

Before use, check the voltage and frequency on the product's rating plate before it is connected to the power supply. All four of the wheels on the filter unit are pivoting and with brakes which makes it very easy to move even into difficult positions. The brakes makes it stay where you leave it even when you move the Extraction-Arm.

Changing the filter cartridge

The unit's filter cartridge is disposable and should be thrown-away after use. Changing the filter cartridge is simple, just open the door of the unit. Unwind the fasteners on top of the unit and take out the cartridge. The life of the filter cartridge varies greatly depending on how the unit is used and how much and what type of pollutants are collected.

Regularly monitor the unit's extraction capacity at the source and change the filter cartridge when the extraction capacity is poor. Handle the used filter cartridges according to the relevant regulations for the substances that have been collected.

Technical data

| | |
|----------------|---------------------------------|
| Capacity: | 1000 m ³ /h |
| Fan | 1.1 kW/1-phase/220V/50Hz |
| Action radius: | Maximum 2 or 3 m Extraction-Arm |
| Swiveling arm: | 360° |

Warning

Risk of personal injury.

1. Do not use the filter for gases in explosive zones or for dust that contains substances hazardous to one's health, e.g beryllium, cadmium, lead or asbestos.
2. Check that the mains connecting cable not is squeezed or in another way damaged. At cable replacement a Plymoth original spare part cable shall be used.

Risk of fire and explosion

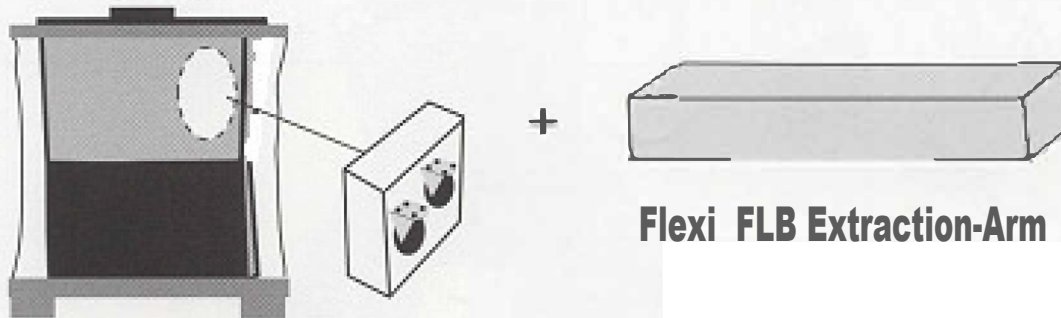
Do not use the filter for inflammable dust or explosive gases.

Mounting Instruction

Mounting instruction - Montageanleitung - Instruction de montage - Instrucción de montaje

Istruzione di montaggio - Montagehandleiding - Asennusohje - Montage instruktion

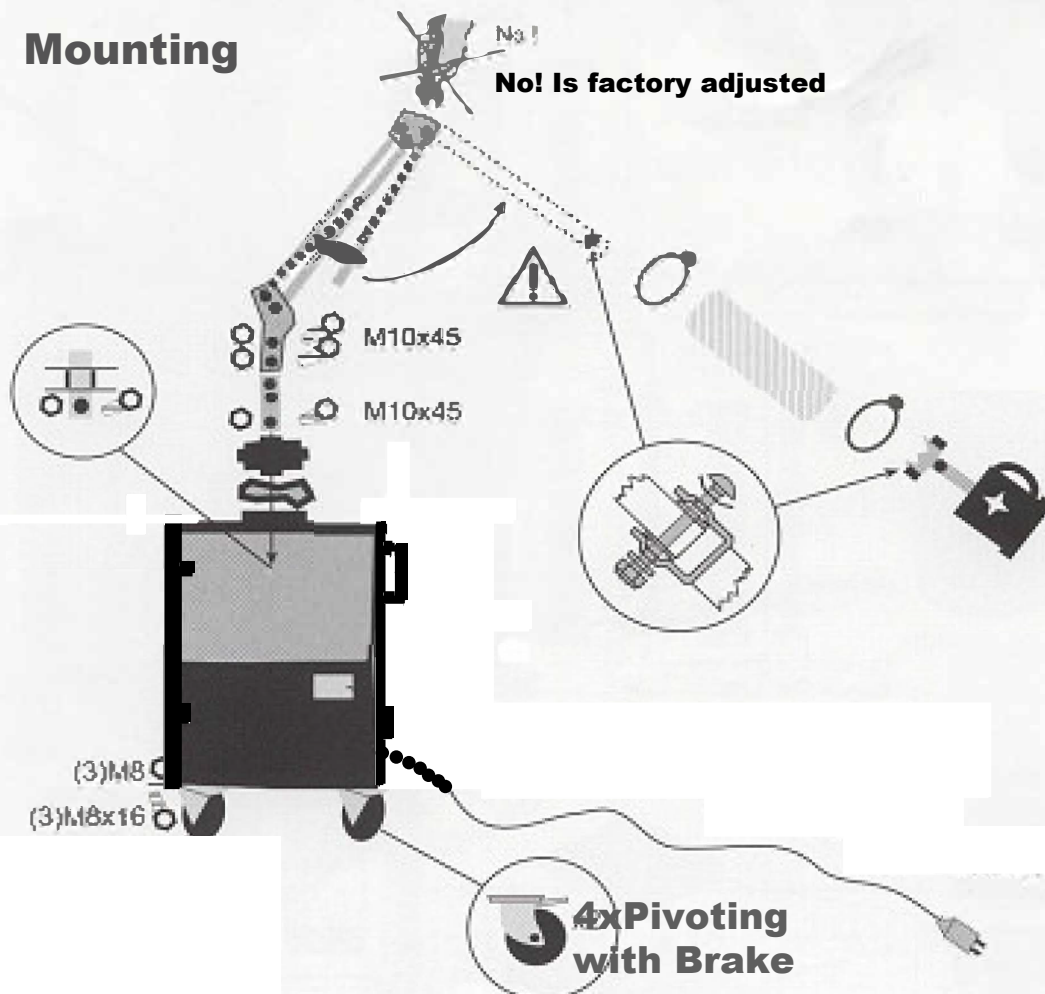
Delivery



MF Mobile Extractor Filter

Flexi FLB Extraction-Arm

Mounting



MF-Active Carbon

Not for Sparks!



**Cleaning
Degreasing
Conservation**

Just Gas and light Dust



**Gluing/Bonding
Molding
Screen printing**

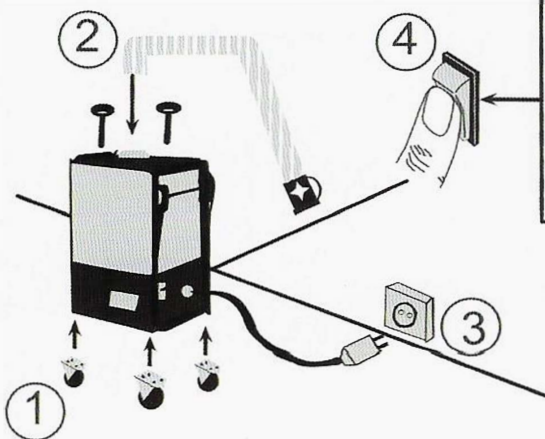
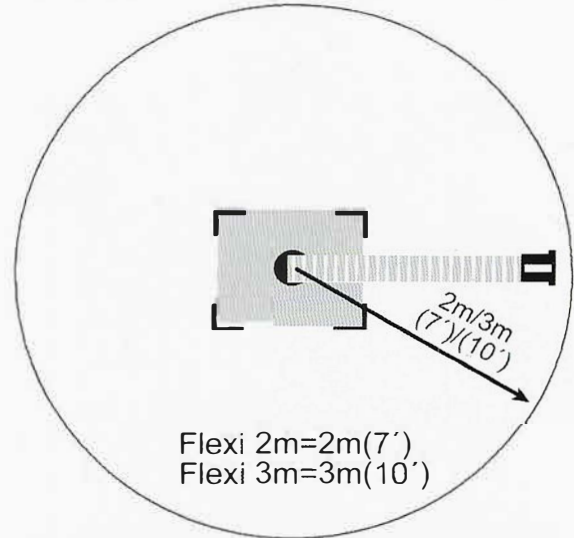
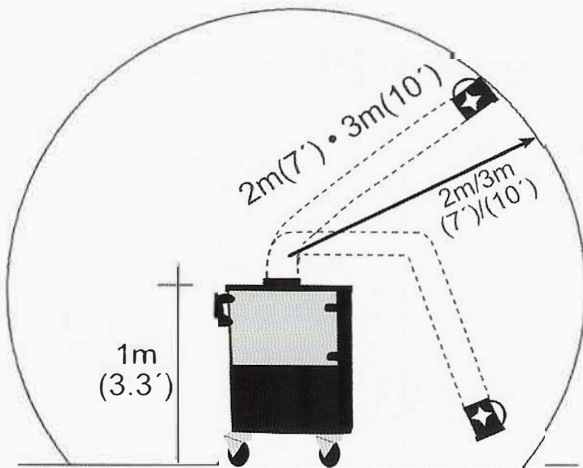
No Liquid



No Dirt

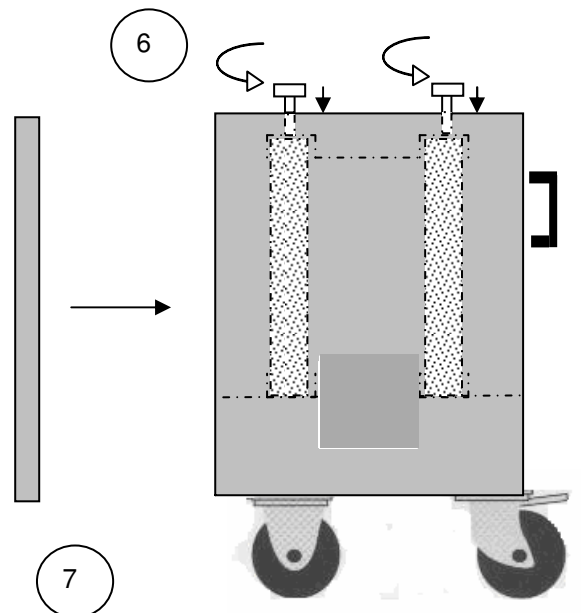
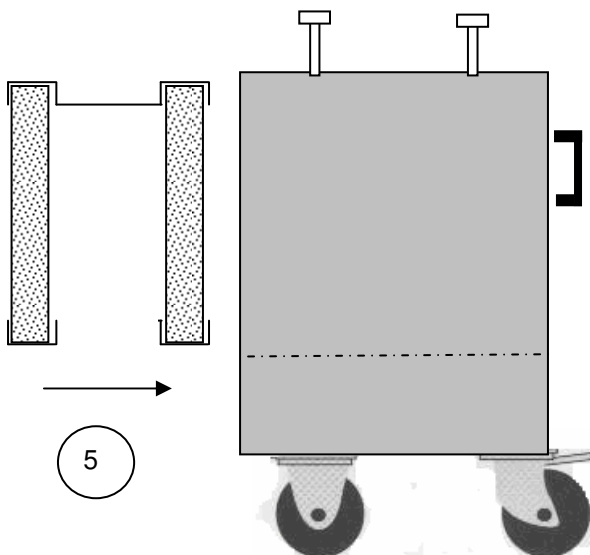
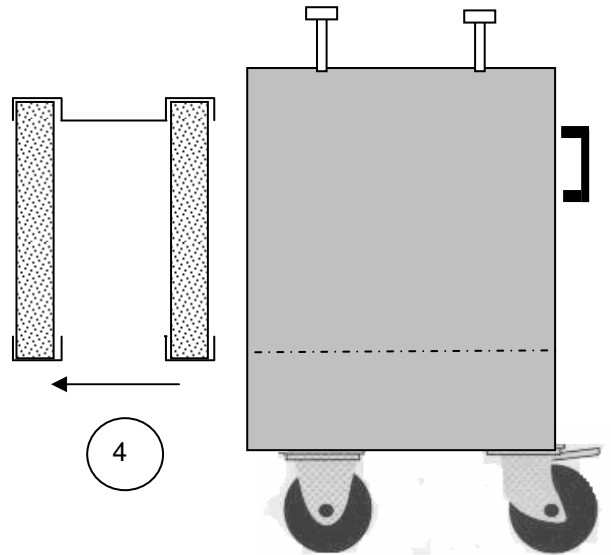
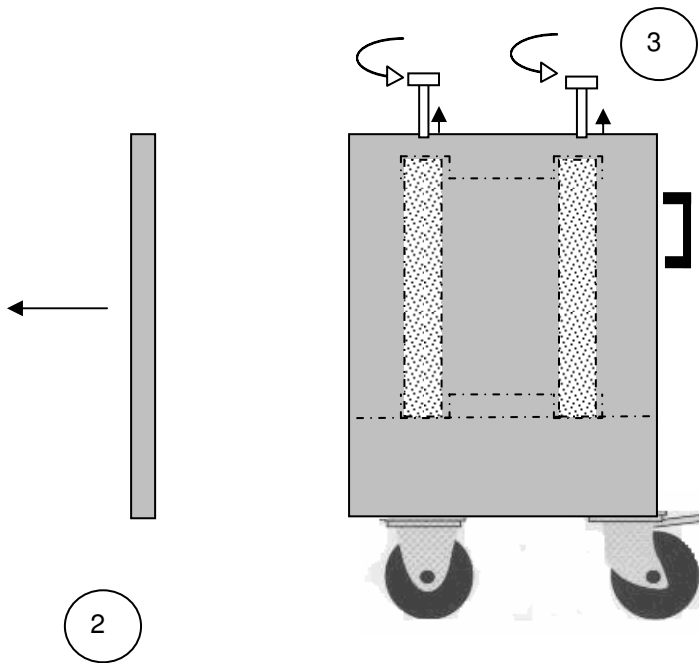
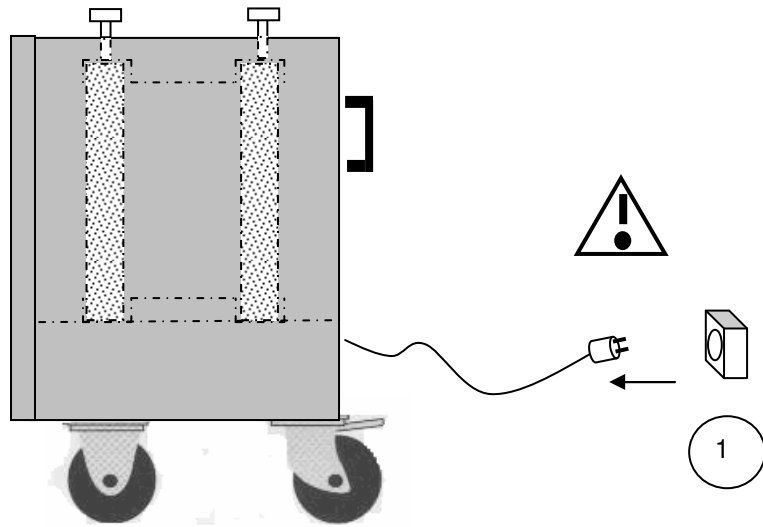


Not Outdoors



- (GB) Circuit breaker with thermal overload
- (D) Geräteschutzschalter mit thermischem Überstromschutz
- (F) Disjoncteur pour équipement à surcharge thermique
- (E) Disyuntor por sobrecarga térmica
- (I) Interruttore termico di protezione dal sovraccarico
- (NL) Uitschakelaar met thermische beveiliging tegen overstroom
- (SF) Virtapiirikatkaisimien lämpöylikuormitus
- (S) Strömbrytare med termiskt överströmsskydd

Change of Filter Cartridge



Spare Parts: MF-Active Carbon. Flexi FLB Extraction-Arm 2m/3m.

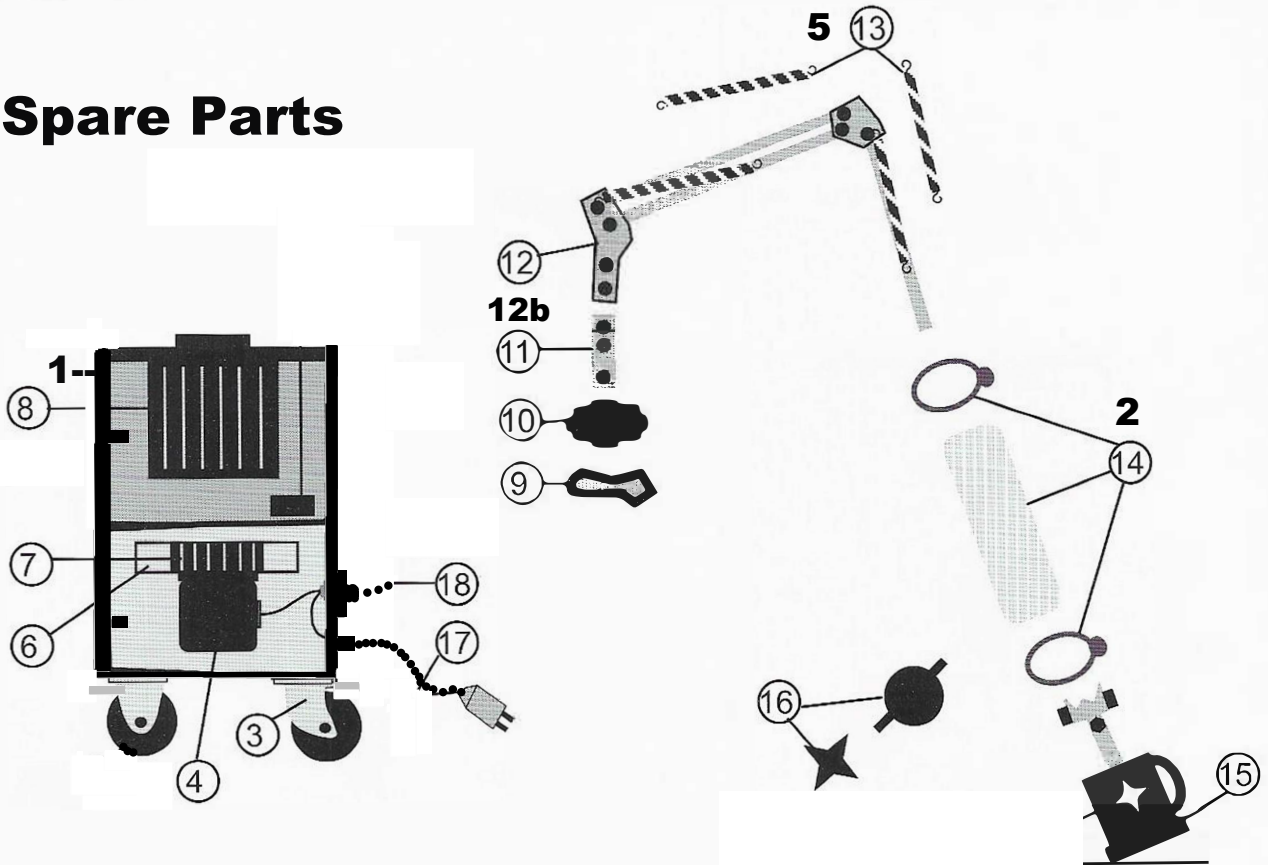
SPARE PARTS

ERSATZTEILE

PIÈCES DE RECHANGE

PIEZAS DE REPUESTO

Spare Parts



ENGLISH ORDER INSTRUCTION

When ordering spare parts always state:
-Detail no. of the spare part and the name (as per list below).
-Quantity of the parts required.

DEUTSCH BESTELLANLEITUNG

Bei der Bestellung von Ersatzteilen immer angeben:
- Ersatzteilnummer und Beschreibung (s. Liste unten).
- Anzahl erforderlicher Ersatzteile.

FRANCAIS INSTRUCTIONS DE COMMANDE

Lors de la commande de pièces de rechange, toujours spécifier:
- Numéro de détail et dénomination (voir liste).
- Quantités des pièces requises.

ESPAÑOL INSTRUCCIONES DE PEDIDO

Quando pida repuestos especifique siempre:
- N° de pieza del repuesto (en la lista).
- Cantidad de repuestos requeridos.

- 1. Door
- 2. Hose+Hose Clamps 2m Arm
- 3. Pivoting Wheel with brake
- 4. Electric motor
- 5. Spring Set 2m Arm
- 6. Fan housing
- 7. Impellar
- 8. Active Carbon Cartridge 30 Ltr.
- 9. Rubber kollar
- 10. House ring
- 11. Shaft
- 12. Inside Arm 2m complete
- 12b. Inside Arm 3m complete
- 13. Spring set 3m Arm
- 14. Hose+Clamps 3m Arm
- 15. Hood, complete
- 16. Damper set
- 17. Cable
- 18. Circuit breaker/overload

- 1. Tür
- 2. Schlauch+Schellen 2m Arm
- 3. Rat mit Bremsvorrichtung
- 4. Elektromotor
- 5. Feder Satz 2m Arm
- 6. Ventilatorgehäuse
- 7. Flügelrad
- 8. Aktiv Kohle Patrone 30 Ltr.
- 9. Dichtungsring aus Gummi
- 10. Schlauchring
- 11. Achse
- 12. Inner Arm 2m komplett
- 12b. Inner Arm 3m Komplett
- 13. Feder Satz 3m Arm
- 14. Schlauch+Shelle 3m Arm
- 15. Haube, komplett
- 16. Drosselklappe satz
- 17. Kabel
- 18. Geräteschutzschalter

- 1. Door
- 2. Hose+Hose Clamps 2m Arm
- 3. Pivoting Wheel with brake
- 4. Electric motor
- 5. Spring Set 2m Arm
- 6. Fan housing
- 7. Impellar
- 8. Active Carbon Cartridge 30 Ltr.
- 9. Rubber kollar
- 10. House ring
- 11. Shaft
- 12. Inside Arm 2m complete
- 12b. Inside Arm 3m complete
- 13. Spring set 3m Arm
- 14. Hose+Clamps 3m Arm
- 15. Hood, complete
- 16. Damper set
- 17. Cable
- 18. Circuit breaker/overload

- 1. Door
- 2. Hose+Hose Clamps 2m Arm
- 3. Pivoting Wheel with brake
- 4. Electric motor
- 5. Spring Set 2m Arm
- 6. Fan housing
- 7. Impellar
- 8. Active Carbon Cartridge 30 Ltr.
- 9. Rubber kollar
- 10. House ring
- 11. Shaft
- 12. Inside Arm 2m complete
- 12b. Inside Arm 3m complete
- 13. Spring set 3m Arm
- 14. Hose+Clamps 3m Arm
- 15. Hood, complete
- 16. Damper set
- 17. Cable
- 18. Circuit breaker/overload



Declaration of conformity

We, J. Plymoth AB, declare under our sole responsibility that the product lines **MF-F9/HEPA, MF-Active Carbon, MF-Eco/F9, MF-Eco/HEPA, MF-Filter-Tables, MF-Eco Filter-Tables, FK-Mesa Backdraft Filter-Tables, MKF Filter-Tables, Labbe, MF-Lab, MF-Eco Lab, CF Central Filters, Mobo-Oil, Denta-Flex, Fica-Flex and VBF-Office** to which this declaration relates is in conformity with Directives 2006/42/EC, 2014/30/EU, 2011/65/EU and Standards EN 60204-1:2006, EN ISO 12100:2010, EN ISO 15012-1:2013, EN 61000-6-2005, EN 61000-6-3:2007, EN ISO 20607:2019.

J. Plymoth AB
Traryds Allen 4D
28772 Traryd


Jenny Nilsson
Verkställande Direktör

2023-01-01