



Technical Data

Flexi 1.5m, 2m, 3m, 4m, 5m.

Dia. 160mm/200mm.

General Information.

The Flexi Extraction-Arms are designed to extract fume and gases. The included Wallbracket has a swivel which allows the Arm to be rotated 360 degrees. The flame-proof flexible hose, with covered steel spiral, has a parallelogram system inside to balance the hose and hood.

The steel hood is black painted and can be turned 90 degrees in all directions. It can easily be positioned at any point within the working area and it has a built in damper.

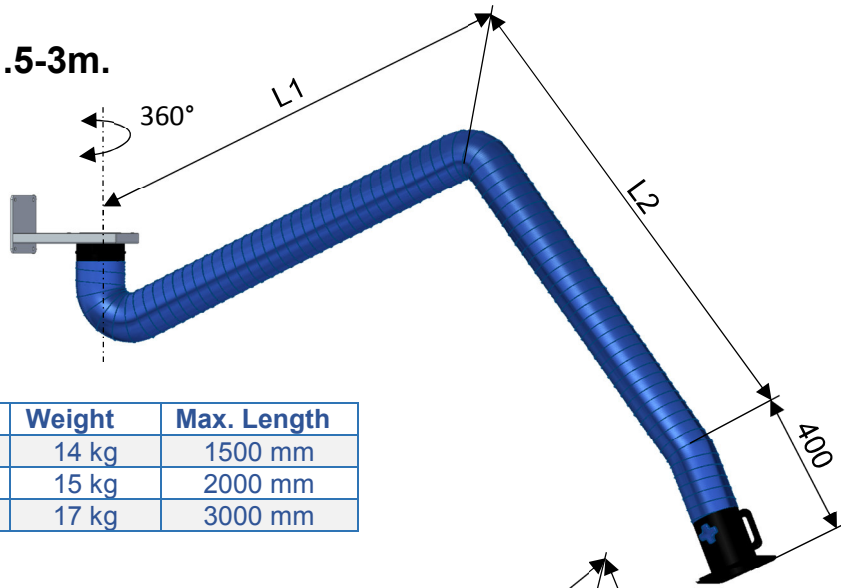
The Flexi Extraction-Arms can be equipped with a separate fan directly on the wallbracket or be connected to a central fan system. Max allowed vacuum is 1500Pa.

Max temperature of the exhausted air is 70 Degrees Celsius.

Recommended airflow for d160mm Arms is 600-1000m³/h.

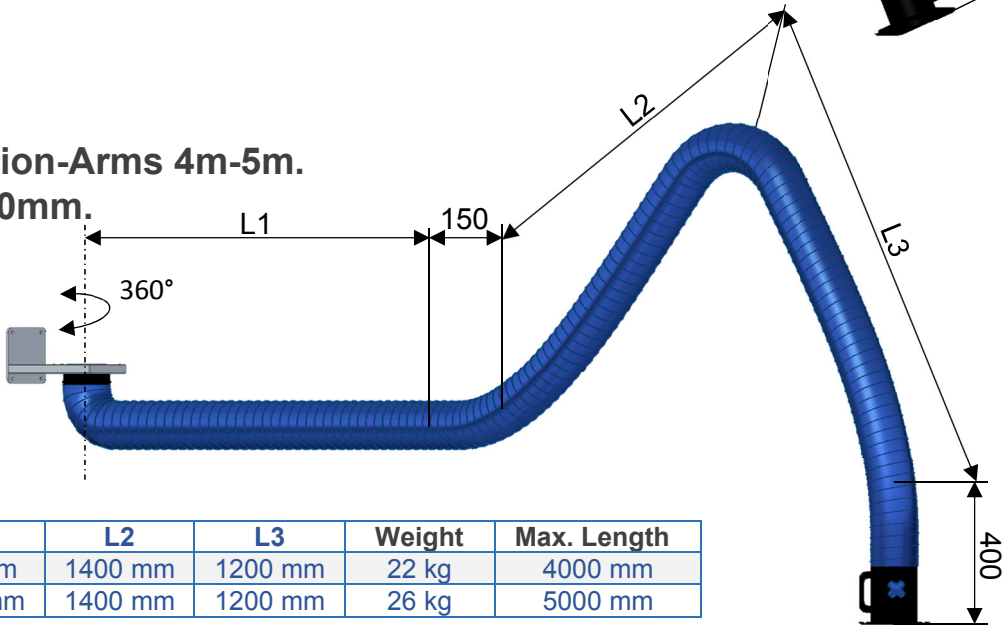
Recommended airflow for d.200mm Arms is 1000-2000m³/h.

**Flexi Extraction-Arms 1.5-3m.
D.160mm/200mm.**



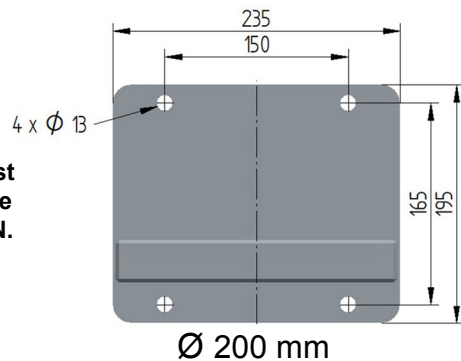
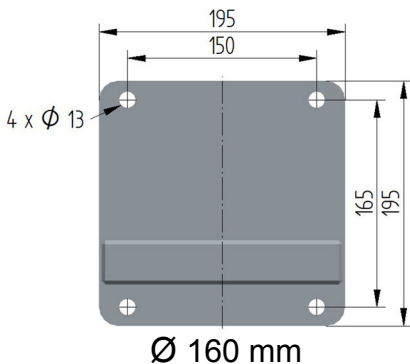
Arm	L1	L2	Weight	Max. Length
1,5 m	500 mm	400 mm	14 kg	1500 mm
2,0 m	800 mm	600 mm	15 kg	2000 mm
3,0 m	1400 mm	1200 mm	17 kg	3000 mm

**Flexi Extraction-Arms 4m-5m.
D.160mm/200mm.**



Arm	L1	L2	L3	Weight	Max. Length
4,0 m	600 mm	1400 mm	1200 mm	22 kg	4000 mm
5,0 m	1700 mm	1400 mm	1200 mm	26 kg	5000 mm

Wallbracket for D.160mm and D.200mm Flexi Arms.

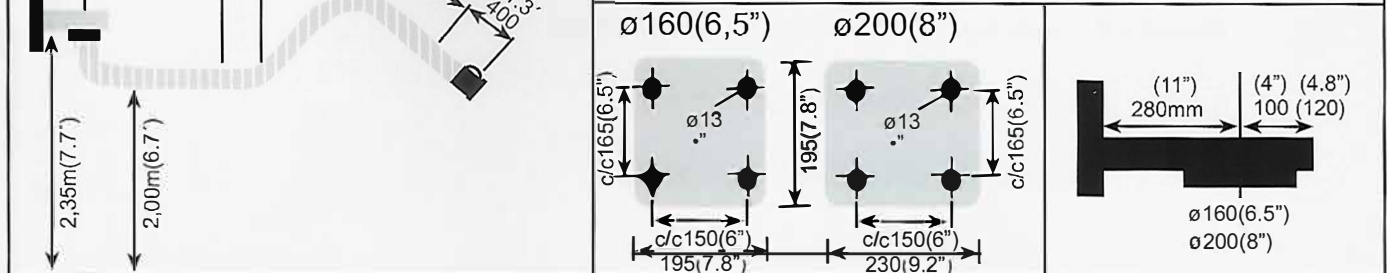
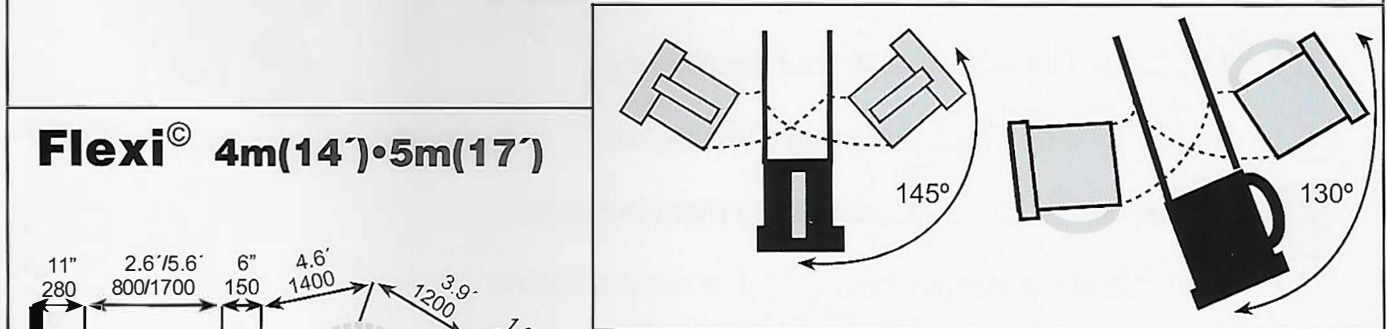
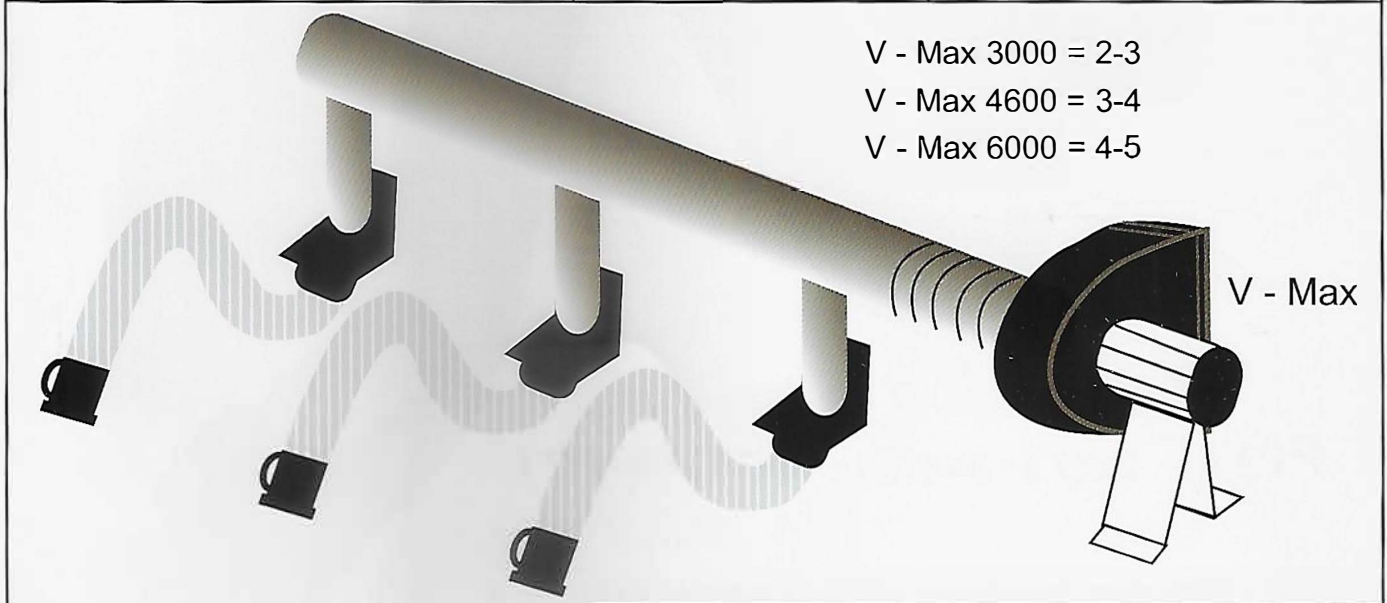
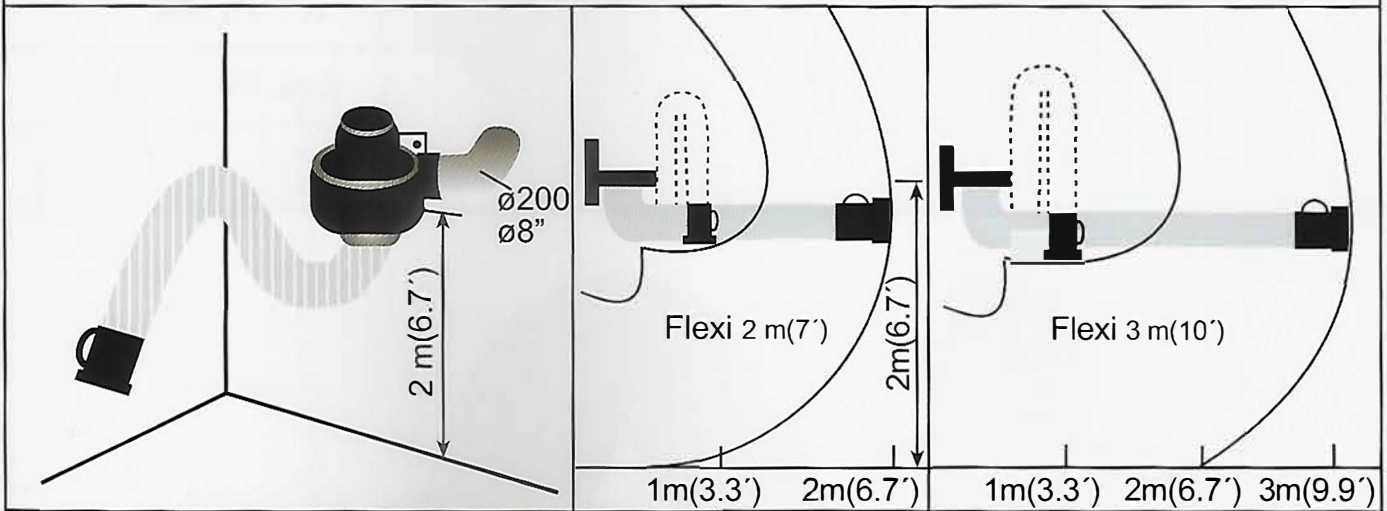


The Wall Bolts must each stand a torque force of min. 1600N.

Ø 160 mm

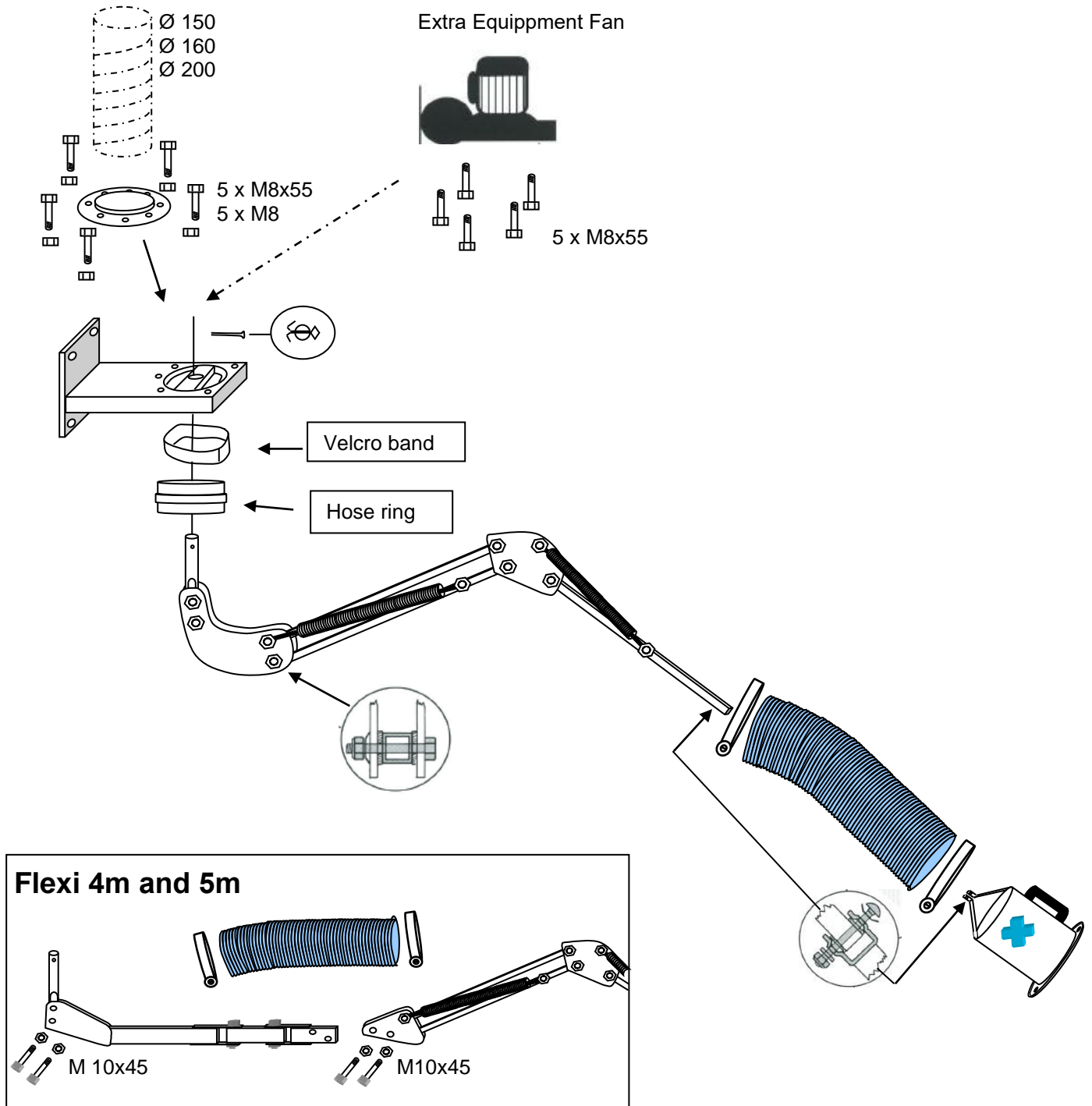
Ø 200 mm

Flexi[®] 1.5m, 2m, 3m, 4m, 5m. \varnothing 160mm and \varnothing 200mm.



3x90°	Pressure drop					
	600m ³ /h•300CFM \varnothing 160mm (6.5")	800m ³ /h•400CFM \varnothing 160mm (6.5")	1000m ³ /h•600CFM \varnothing 160mm (6.5")	1200m ³ /h•685CFM \varnothing 200mm (8")	1500m ³ /h•850CFM \varnothing 200mm (8")	1750m ³ /h•1000CFM \varnothing 200mm (8")
Flexi 1.5-2m	270 Pa (1.1")	450 Pa (1.8")	810 Pa (3.2")	175 Pa (0.7")	275 Pa (1.1")	400 Pa (1.6")
Flexi 3m (10')	290 Pa (1.2")	510 Pa (2.0")	900 Pa (3.6")	200 Pa (0.8")	300 Pa (1.2")	450 Pa (1.8")
Flexi 4m (14')	310 Pa (1.3")	580 Pa (2.3")	990 Pa (4.0")	250 Pa (1.0")	350 Pa (1.4")	500 Pa (2.0")
Flexi 5m (17')	330 Pa (1.4")	650 Pa (2.6")	1080 Pa (4.3")	275 Pa (1.1")	400 Pa (1.6")	600 Pa (2.4")

Assembling instruction.

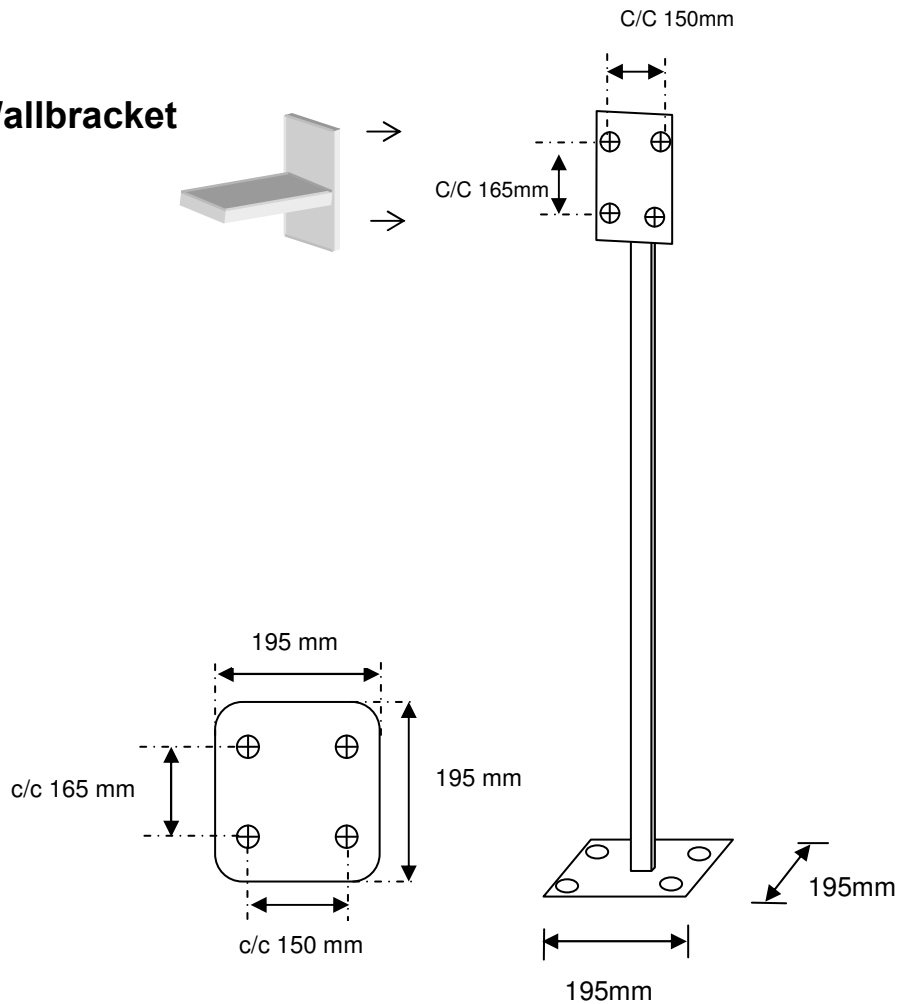


Assembly

1. Mount the wall bracket
2. Mount the parallelogram arm
3. Pull the hose over the parallelogram arm
4. Mount the hood
5. Fasten the hose

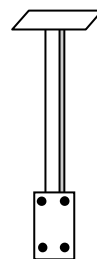
Ceiling and Floor Columns for Flexi Extraction-Arms 1.5-5m d.160mm/200mm.

Wallbracket



Height	Artikel No.
0,5m	P-427
0,75m	P-428
1,0m	P-021
1,25m	P-429
1,5m	P-430
1,75m	P-431
2,0m	P-022
2,25m	P-432
2,5m	P-433

Also for Ceiling use





Declaration of conformity

We, J. Plymoth AB, declare under our sole responsibility that the product lines **Flexa, Chemikus, Flexi, Super-Max and Super-Vac** to which this declaration relates is in conformity with Directives 2006/42/EC and Standards EN ISO 12100:2010 and EN ISO20607;2019.

J. Plymoth AB
Traryds Allen 4D
28772 Traryd


Jenny Nilsson
Verkställande Direktör

2023-01-01